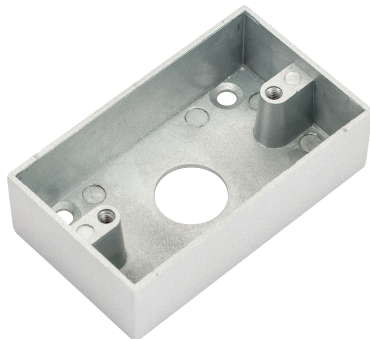




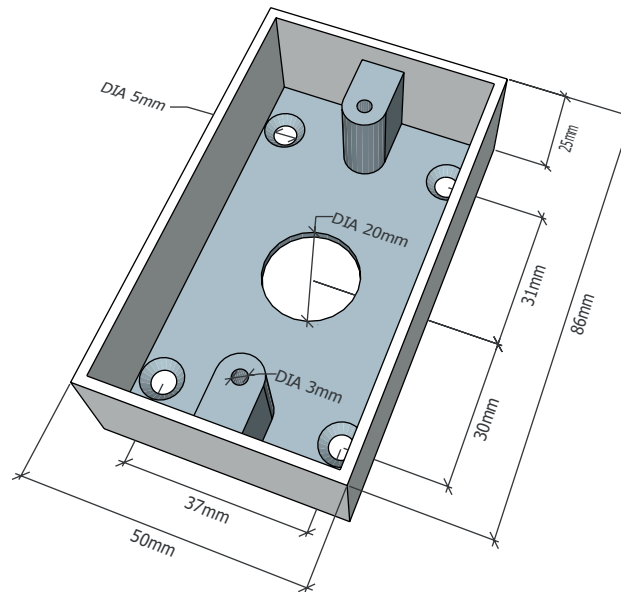
MBB-800A-M

Carcasa pentru montarea aplicata a butoanelor

Imagine



Dimensiuni



YLI ETERNIT ACCES SRL
A.: HAIDUCULUI 3A, CLUJ-NAPOCA
T.: +40 264 484989
W.: www.yli.ro

MBB-800A-M
Carcasa pentru montare aplicata
butoane de acces
FISA TEHNICA

Caracteristici

- Montare: Aplicata
- Compatibilitate: PBK-800A
- Material: Aluminiu
- Dimensiuni: 86(H) x 50(l) x 25(A) mm
- Masa bruta: 0.13 kg

Observatii



EEE FAC OBIECTUL UNEI
COLECTARI SEPARATE

