

TSK-830A(LED)

Buton de iesire aplicabil, cu atingere

DESCRIERE

Buton de iesire aplicabil, cu atingere si cu led de stare. Comanda se face prin simpla atingere a butonului, fara a fi necesara apasarea acestuia.

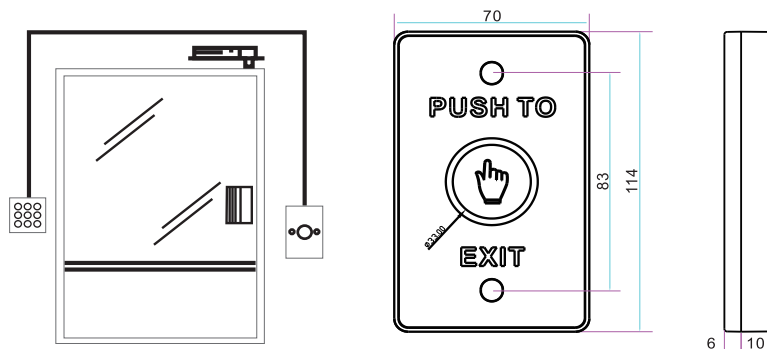
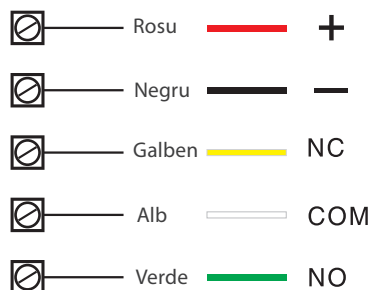
CARACTERISTICI

- Cu atingere
- Montare la interior
- Led de stare bicolor
- Temporizare: 1 secunda
- Material: plastic

SPECIFICATII

- Alimentare: 12-24VDC
- Consum: 30mA in stand-by, 70mA in actionare
- Contacte: NO/NC/COM
- Iesire releu: 1A@30VDC
- Dimensiuni: 114Lx70Wx16H(mm)
- Greutate: 120g

SCHEMA ELECTRICA



Fisa tehnica

1